

2021 NYS Masters



Oil Pattern Distance: **40 Feet**
 Forward Oil Total: **17.775 mL**
 Forward Boards Crossed: **395 Boards**

Reverse Brush Drop: **39 Feet**
 Reverse Oil Total: **9.18 mL**
 Reverse Boards Crossed: **204 Boards**

Oil Per Board: **45 uL**
 Volume Oil Total: **26.955 mL**
 Total Boards Crossed: **599 Boards**

Start	Stop	Loads	Speed	Crossed	Start	End	Feet	T.Oil
1	2L 2R	6	18	222	0.0	12.7	12.7	9990
2	5L 5R	1	18	31	12.7	15.2	2.5	1395
3	7L 7R	2	18	54	15.2	20.3	5.1	2430
4	8L 8R	2	18	50	20.3	25.4	5.1	2250
5	10L 10R	1	22	21	25.4	28.5	3.1	945
6	12L 12R	1	22	17	28.5	31.6	3.1	765
7	2L 2R	0	30	0	31.6	40.0	8.4	0

Conditioner: Type In or Select One
 TransferType: Type In or Select One

Forward Reverse More

Start	Stop	Loads	Speed	Crossed	Start	End	Feet	T.Oil
1	2L 2R	0	30	0	40.0	30.0	-10.0	0
2	12L 12R	1	22	17	30.0	26.9	-3.1	765
3	10L 10R	3	22	63	26.9	17.6	-9.3	2835
4	8L 8R	1	18	25	17.6	15.1	-2.5	1125
5	5L 5R	2	18	62	15.1	10.0	-5.1	2790
6	2L 2R	1	18	37	10.0	7.5	-2.5	1665
7	2L 2R	0	14	0	7.5	0.0	-7.5	0

Forward Reverse More

Conditioner:
Type In or Select One

TransferType:
Type In or Select One

Forward



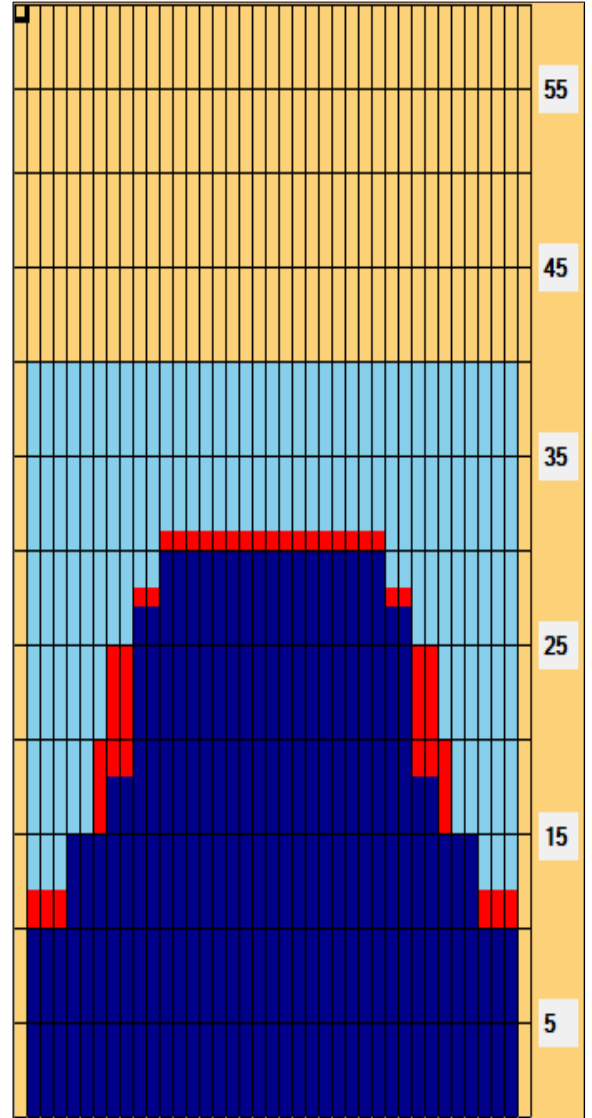
Reverse



Combined



Buff



Item	3L-7L:18L-18R	8L-12L:18L-18R	13L-17L:18L-18R	18L-18R:17R-13R	18L-18R:12R-8R	18L-18R:7R-3R
Description	Outside Track:Middle	Middle Track:Middle	Inside Track:Middle	Middle: Inside Track	Middle:Middle Track	Middle:Outside Track
Track Zone Ratio	2.28	1.18	1	1	1.18	2.28

